

# Confined Space Inventory for Saint Cloud Public Schools



**Inspector:** Rachel Koehler

**Inspection Date:** 12/5/2006

**Building:** Talahi Elementary

**Location:** Boiler Room

**Type of Space:** Boiler #1

**Space Classification:** *Non-Permit*

**Potential Hazards:**

*No Hazards*

**Number of Entries into Space:** 1

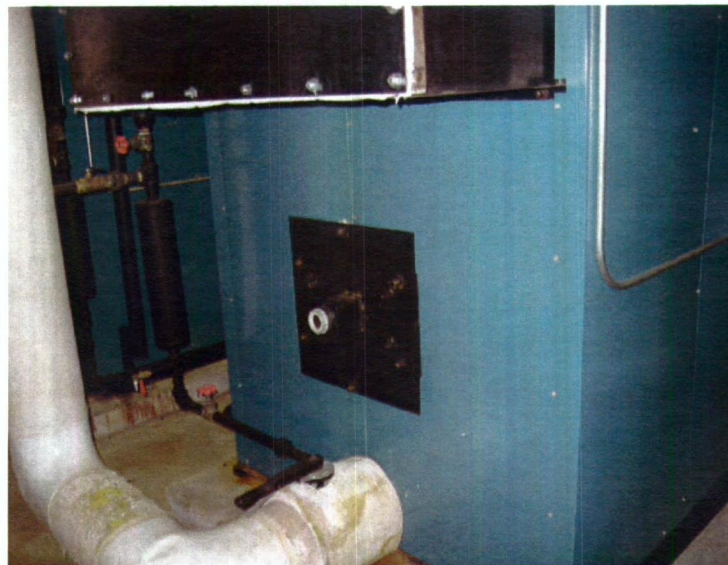
**Other Considerations:**

*Electrical*

*Gas lines*

*Temperature extremes*

**Comments:** *Lockout/Tagout procedures for boiler are required prior to entry.*



**Photo Date:** 12/5/2006

**Photo Description**

Boiler #1

# Confined Space Inventory for Saint Cloud Public Schools



**Inspector:** Rachel Koehler

**Inspection Date:** 12/5/2006

**Building:** Talahi Elementary

**Location:** Boiler Room

**Type of Space:** Boiler #2

**Space Classification:** Non-Permit

**Potential Hazards:**

*No Hazards*

**Number of Entries into Space:** 1

**Other Considerations:**

*Electrical*

*Gas lines*

*Temperature extremes*

**Comments:** Lockout/Tagout procedures for boiler are required prior to entry.



**Photo Date:** 12/5/2006

**Photo Description**

Boiler #2



# Confined Space Inventory for Saint Cloud Public Schools



**Inspector:** Rachel Koehler

**Inspection Date:** 12/5/2006

**Building:** Talahi Elementary

**Location:** Boiler Room

**Type of Space:** Water tank

**Space Classification:** Permit

**Potential Hazards:**

*Potential for oxygen deficiency*

*Engulfment*

*Configuration*

**Number of Entries into Space:** 1

**Other Considerations:**

*City sewer or water*

*Poor lighting*

*Slick/wet surfaces*

**Comments:** Tank must be emptied, and all supply lines must be locked out and tagged out prior to entry.



**Photo Date:** 12/5/2006

**Photo Description**

Water Tank

# Confined Space Inventory for Saint Cloud Public Schools



**Inspector:** Rachel Koehler

**Inspection Date:** 12/5/2006

**Building:** Talahi Elementary

**Location:** Exterior Building South side

**Type of Space:** Storm sewer

**Space Classification:** Permit

**Potential Hazards:**

*Potential for oxygen deficiency*

*Engulfment*

*Configuration*

**Number of Entries into Space:** 1

**Other Considerations:**

*City sewer or water*

*Fall hazards*

*Poor lighting*

*Slick/wet surfaces*

**Comments:** None



**Photo Date:** 12/5/2006

**Photo Description**

Storm Sewer



# Confined Space Inventory for Saint Cloud Public Schools



**Inspector:** Rachel Koehler

**Inspection Date:** 12/5/2006

**Building:** Talahi Elementary

**Location:** Exterior Building East side

**Type of Space:** Manhole

**Space Classification:** Permit

**Potential Hazards:**

*Potential for oxygen deficiency*

*Engulfment*

*Configuration*

**Number of Entries into Space:** 1

**Other Considerations:**

*City sewer or water*

*Fall hazards*

*Poor lighting*

*Slick/wet surfaces*

**Comments:** None



**Photo Date:** 12/5/2006

**Photo Description**

Manhole

# Confined Space Inventory for Saint Cloud Public Schools



**Inspector:** Rachel Koehler

**Inspection Date:** 12/5/2006

**Building:** Talahi Elementary

**Location:** Exterior Building West side

**Type of Space:** Storm sewer ( 3 )

**Space Classification:** Permit

**Potential Hazards:**

*Potential for oxygen deficiency*

*Engulfment*

*Configuration*

**Number of Entries into Space:** 1

**Other Considerations:**

*City sewer or water*

*Fall hazards*

*Poor lighting*

*Slick/wet surfaces*

**Comments:** None



**Photo Date:** 12/5/2006

**Photo Description**

Storm Sewer



# Confined Space Inventory for Saint Cloud Public Schools



**Inspector:** Rachel Koehler

**Inspection Date:** 12/5/2006

**Building:** Talahi Elementary

**Location:** Exterior Building West side

**Type of Space:** Storm sewer

**Space Classification:** Permit

**Potential Hazards:**

*Potential for oxygen deficiency*

*Engulfment*

*Configuration*

**Number of Entries into Space:** 1

**Other Considerations:**

*City sewer or water*

*Fall hazards*

*Poor lighting*

*Slick/wet surfaces*

**Comments:** None



**Photo Date:** 12/5/2006

**Photo Description**

Storm Sewer